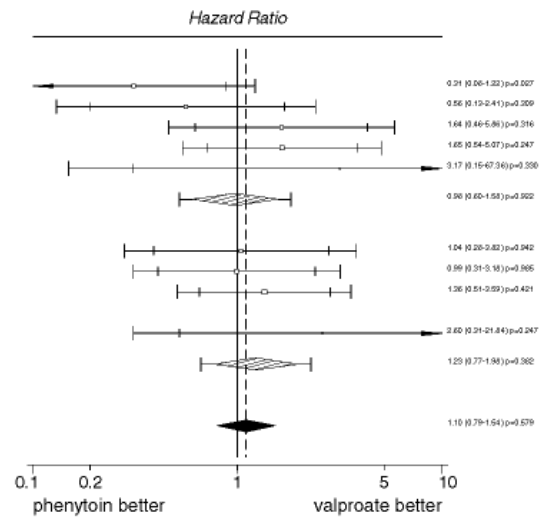


## Time to withdrawal of allocated treatment

	(no. events/no. entered)		O-E	Variance
	phenytoin	valproate		
<b>Generalized seizures</b>				
Heller 1995	3/34	11/33	-4.11	3.47
de Silva 1996	5/24	8/23	-1.80	3.15
Turnbull 1985	11/39	7/38	2.03	4.10
Ramsay 1992	11/50	12/86	2.66	5.30
Shakir 1981	2/6	1/8	0.82	0.71
<b>Sub-total</b>	<b>32/153</b>	<b>39/188</b>	<b>-0.40</b>	<b>16.74</b>
<b>Partial seizures</b>				
Heller 1995	9/27	7/24	0.14	3.92
de Silva 1996	12/29	9/24	-0.04	4.91
Turnbull 1985	17/31	14/32	2.13	7.00
Ramsay 1992	*	*		
Shakir 1981	4/9	2/10	1.40	1.47
<b>Sub-total</b>	<b>42/96</b>	<b>32/90</b>	<b>3.64</b>	<b>17.30</b>
<b>Total</b>	<b>74/249</b>	<b>71/278</b>	<b>3.24</b>	<b>34.04</b>

\* no data in category



Generalized seizures: HR=0.976 [95% CI 0.605-1.577],  $\chi^2_{(1)} = 0.009$ ,  $p=0.922$ ; Heterogeneity:  $I^2 = 9.189$ ,  $p=0.057$   
 Partial seizures: HR=1.234 [95% CI 0.770-1.977],  $\chi^2_{(1)} = 0.765$ ,  $p=0.382$ ; Heterogeneity:  $I^2 = 1.231$ ,  $p=0.746$   
 Overall: HR=1.100 [95% CI 0.786-1.539],  $\chi^2_{(1)} = 0.308$ ,  $p=0.579$ ; Heterogeneity:  $I^2 = 10.886$ ,  $p=0.208$   
 Interaction:  $\chi^2_{(1)} = 0.466$ ,  $p=0.495$  Trend:  $\chi^2_{(1)} = 0.466$ ,  $p=0.495$

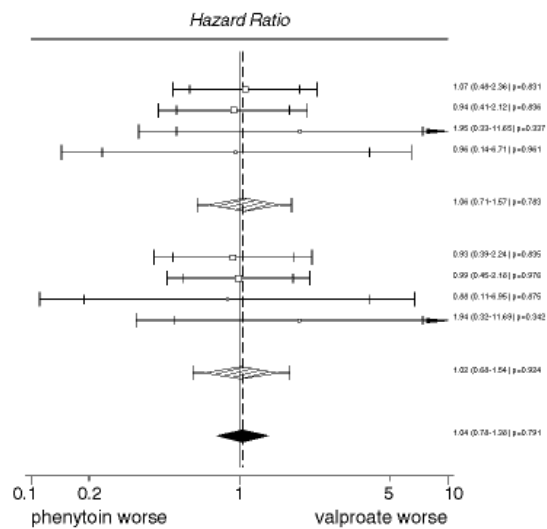
Phenytoin versus valproate monotherapy for partial onset seizures and generalized onset tonic-clonic seizures.

Smith C Tudur, AG Marson, PR Williamson. The Cochrane Database of Systematic Reviews 2001, Issue 4. Art. No.: CD001769. DOI: 10.1002/14651858.CD001769.

## Time to twelve month remission

	(no. events/no. entered)		O-E	Variance
	phenytoin	valproate		
<b>Generalized seizures</b>				
Heller 1995	27/35	24/36	0.69	10.58
de Silva 1996	23/25	22/24	-0.65	9.92
Craig 1994	11/32	11/41	1.38	2.08
Turnbull 1985	30/39	31/38	-0.07	1.77
Ramsay 1992	*	*		
<b>Sub-total</b>	<b>91/131</b>	<b>88/139</b>	<b>1.36</b>	<b>24.34</b>
<b>Partial seizures</b>				
Heller 1995	20/28	17/25	-0.61	8.63
de Silva 1996	25/29	21/25	-0.10	10.67
Craig 1994	5/39	3/35	-0.20	1.56
Turnbull 1985	15/31	18/32	1.36	2.06
Ramsay 1992	*	*		
<b>Sub-total</b>	<b>65/127</b>	<b>59/117</b>	<b>0.46</b>	<b>22.92</b>
<b>Total</b>	<b>156/258</b>	<b>147/256</b>	<b>1.82</b>	<b>47.26</b>

\* no data in category

Generalized seizures: HR=1.057 (95% CI 0.711-1.573),  $\chi^2_{(1)}=0.076$ , p=0.783;Partial seizures: HR=1.020 (95% CI 0.677-1.536),  $\chi^2_{(1)}=0.009$ , p=0.924;Overall: HR=1.039 (95% CI 0.781-1.382),  $\chi^2_{(1)}=0.070$ , p=0.791;Het  $\chi^2_{(1)}=0.938$ , p=0.617Het  $\chi^2_{(1)}=0.962$ , p=0.610Het  $\chi^2_{(1)}=1.913$ , p=0.964Interaction  $\chi^2_{(1)}=0.015$ , p=0.903 Trend  $\chi^2_{(1)}=0.015$ , p=0.903

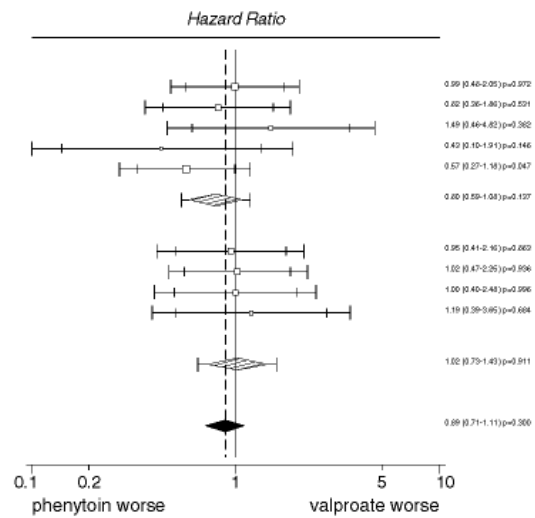
Phenytoin versus valproate monotherapy for partial onset seizures and generalized onset tonic-clonic seizures.

Smith C Tudur, AG Marson, PR Williamson. The Cochrane Database of Systematic Reviews 2001, Issue 4. Art. No.: CD001769. DOI: 10.1002/14651858.CD001769.

## Time to 6 month remission

	(no. events/no. entered)		O-E	Variance
	phenytoin	valproate		
<b>Generalized seizures</b>				
Heller 1995	32/35	29/36	-0.12	12.52
de Silva 1996	23/25	23/24	-1.98	9.97
Craig 1994	19/32	30/41	1.92	4.82
Turnbull 1985	30/39	33/38	-2.53	3.04
Ramsay 1992	17/48	36/77	-6.99	12.41
<b>Sub-total</b>	<b>121/179</b>	<b>151/216</b>	<b>-9.71</b>	<b>42.76</b>
<b>Partial seizures</b>				
Heller 1995	22/28	19/25	-0.54	9.77
de Silva 1996	25/29	21/25	0.26	10.77
Craig 1994	21/39	19/35	-0.02	8.06
Turnbull 1985	18/31	23/32	0.94	5.31
Ramsay 1992	*	*		
<b>Sub-total</b>	<b>86/127</b>	<b>82/117</b>	<b>0.65</b>	<b>33.92</b>
<b>Total</b>	<b>207/306</b>	<b>233/333</b>	<b>-9.06</b>	<b>76.67</b>

\* no data in category



Generalized seizures: HR=0.797 (95% CI 0.590-1.075),  $\chi^2_{(1)} = 2.206$ ,  $p=0.137$ ; Heterogeneity:  $\chi^2_{(4)} = 5.005$ ,  $p=0.287$   
 Partial seizures: HR=1.019 (95% CI 0.728-1.427),  $\chi^2_{(1)} = 0.012$ ,  $p=0.911$ ; Heterogeneity:  $\chi^2_{(3)} = 0.190$ ,  $p=0.979$   
 Overall: HR=0.889 (95% CI 0.710-1.111),  $\chi^2_{(1)} = 1.072$ ,  $p=0.300$ ; Heterogeneity:  $\chi^2_{(6)} = 6.342$ ,  $p=0.609$   
 Interaction:  $\chi^2_{(1)} = 1.147$ ,  $p=0.284$  Trend:  $\chi^2_{(1)} = 1.147$ ,  $p=0.284$

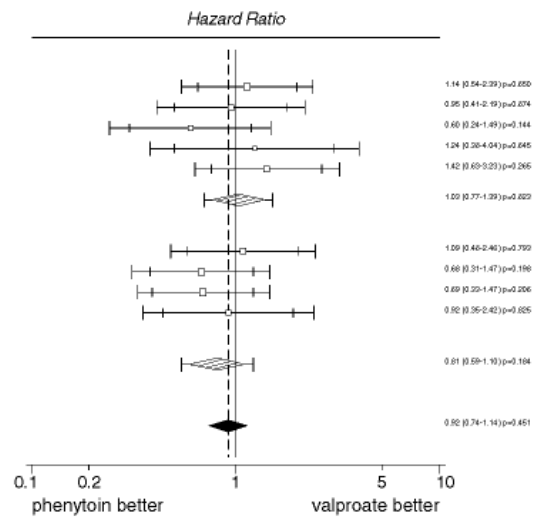
Phenytoin versus valproate monotherapy for partial onset seizures and generalized onset tonic-clonic seizures.

Smith C Tudur, AG Marson, PR Williamson. The Cochrane Database of Systematic Reviews 2001, Issue 4. Art. No.: CD001769. DOI: 10.1002/14651858.CD001769.

## Time to first seizure

	(no. events/no. entered)		O-E	Variance
	phenytoin	valproate		
<b>Generalized seizures</b>				
Heller 1995	26/35	23/36	1.58	12.15
de Silva 1996	20/25	19/24	-0.49	9.50
Craig 1994	11/32	21/41	-4.12	7.95
Turnbull 1985	11/39	9/38	1.00	4.75
Ramsay 1992	19/48	25/77	3.51	9.94
<b>Sub-total</b>	<b>87/179</b>	<b>97/216</b>	<b>1.49</b>	<b>44.29</b>
<b>Partial seizures</b>				
Heller 1995	24/28	19/25	0.83	9.97
de Silva 1996	26/29	24/25	-4.29	11.14
Craig 1994	24/39	25/35	-4.35	11.84
Turnbull 1985	21/31	24/32	-0.59	7.12
Ramsay 1992	*	*		
<b>Sub-total</b>	<b>95/127</b>	<b>92/117</b>	<b>-8.41</b>	<b>40.08</b>
<b>Total</b>	<b>182/306</b>	<b>189/333</b>	<b>-6.92</b>	<b>84.37</b>

\* no data in category

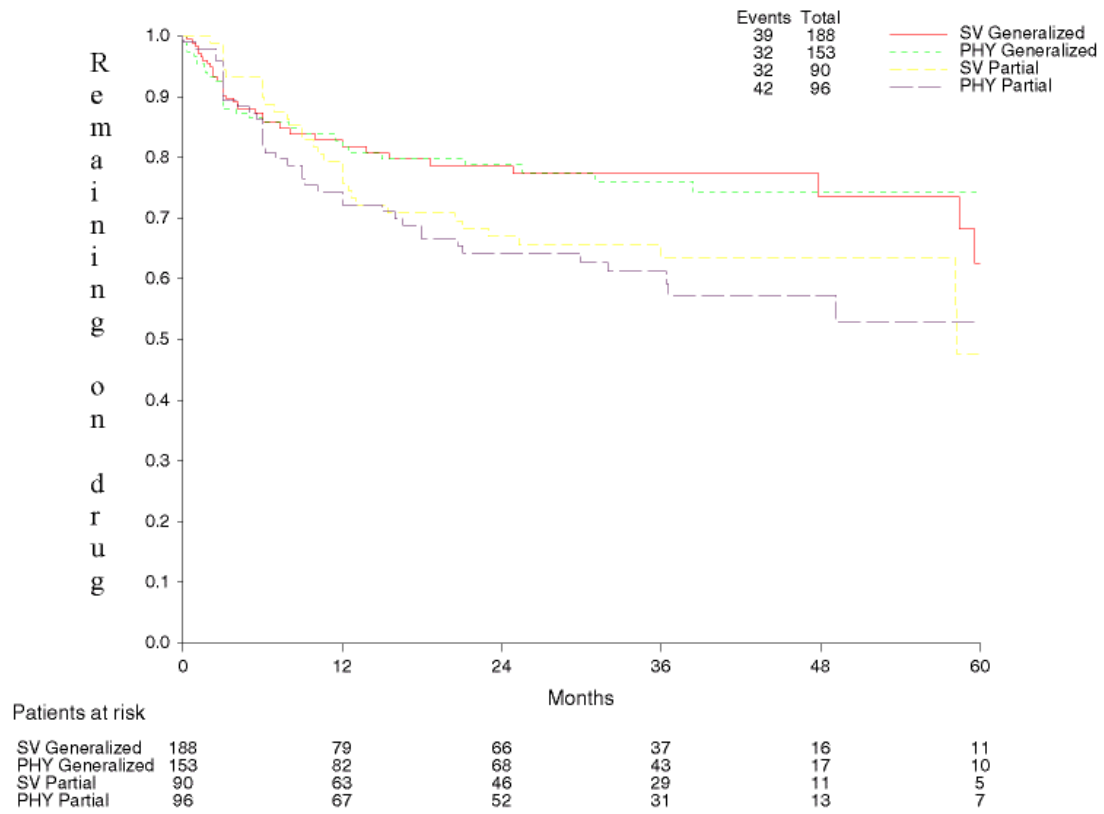


Generalized seizures: HR=1.034 [95% CI 0.770-1.398],  $\chi^2_{(1)}=0.050$ ,  $p=0.622$ ; Heterogeneity:  $\chi^2_{(4)}=3.770$ ,  $p=0.438$   
 Partial seizures: HR=0.811 [95% CI 0.595-1.105],  $\chi^2_{(1)}=1.764$ ,  $p=0.184$ ; Heterogeneity:  $\chi^2_{(3)}=1.608$ ,  $p=0.658$   
 Overall: HR=0.921 [95% CI 0.744-1.140],  $\chi^2_{(1)}=0.567$ ,  $p=0.451$ ; Heterogeneity:  $\chi^2_{(6)}=6.625$ ,  $p=0.578$   
 Interaction:  $\chi^2_{(1)}=1.247$ ,  $p=0.264$  Trend:  $\chi^2_{(1)}=1.248$ ,  $p=0.264$

Phenytoin versus valproate monotherapy for partial onset seizures and generalized onset tonic-clonic seizures.

Smith C Tudur, AG Marson, PR Williamson. The Cochrane Database of Systematic Reviews 2001, Issue 4. Art. No.: CD001769. DOI: 10.1002/14651858.CD001769.

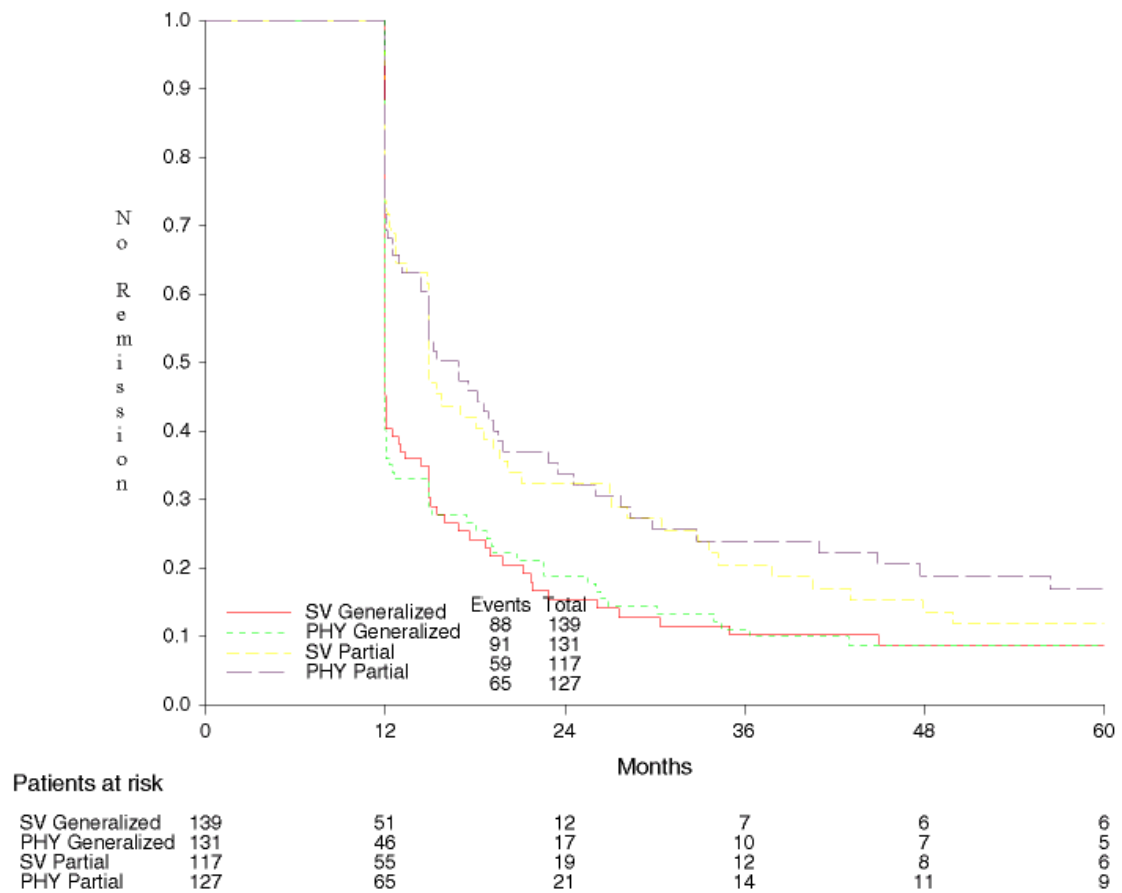
### Time to withdrawal of allocated treatment



Phenytoin versus valproate monotherapy for partial onset seizures and generalized onset tonic-clonic seizures.

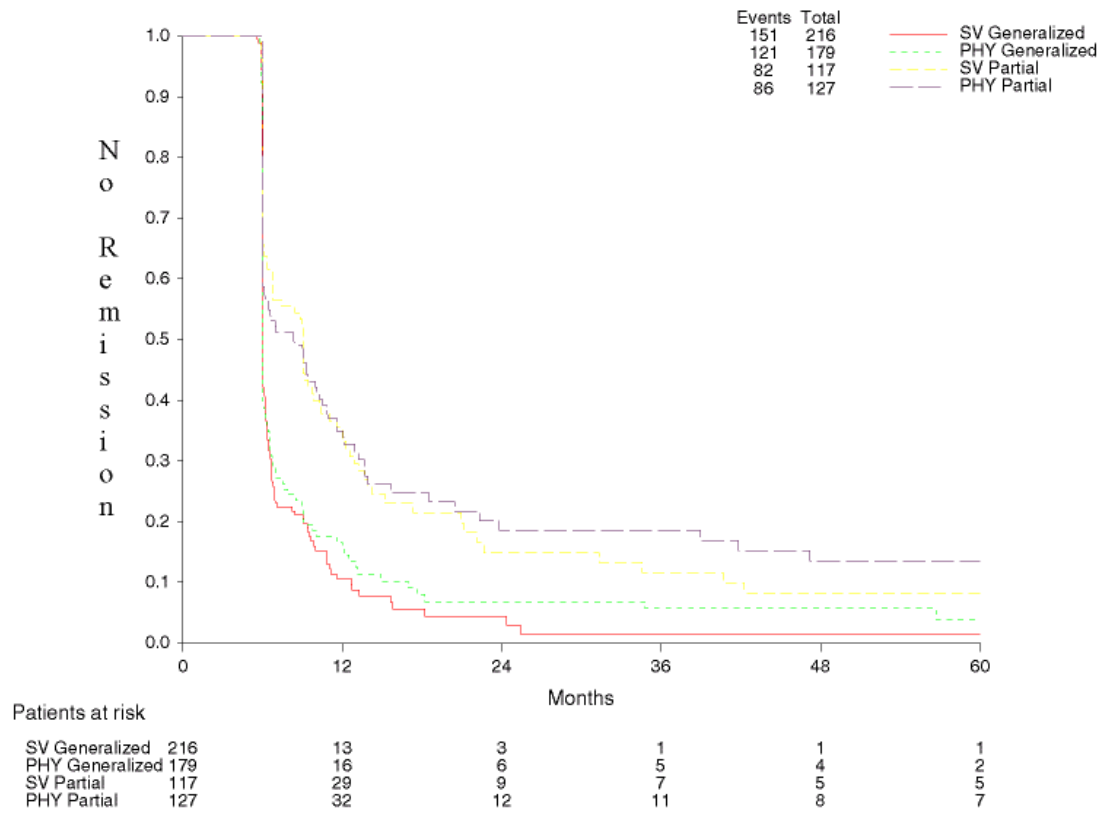
*Smith C Tudur, AG Marson, PR Williamson.* The Cochrane Database of Systematic Reviews 2001, Issue 4. Art. No.: CD001769. DOI: 10.1002/14651858.CD001769.

### Time to 12 month remission



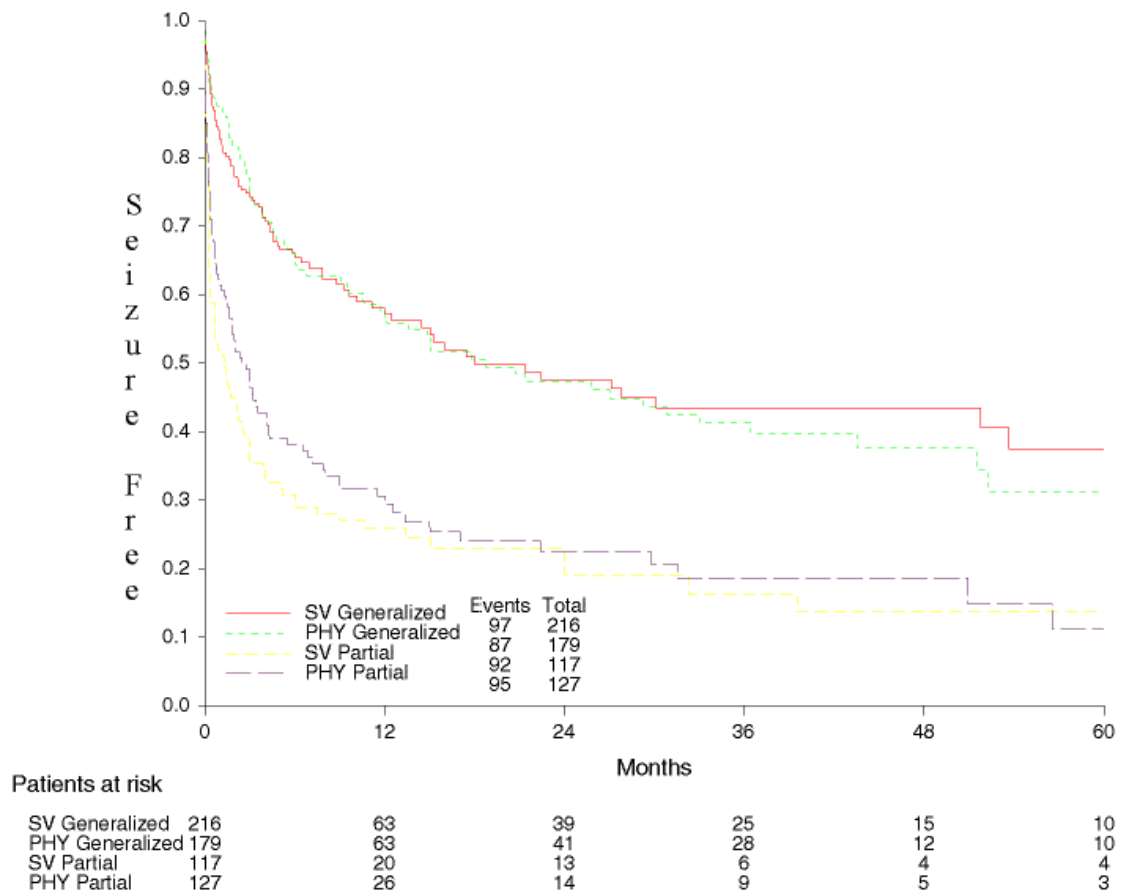
Phenytoin versus valproate monotherapy for partial onset seizures and generalized onset tonic-clonic seizures.  
*Smith C Tudur, AG Marson, PR Williamson.* The Cochrane Database of Systematic Reviews 2001, Issue 4. Art. No.: CD001769. DOI: 10.1002/14651858.CD001769.

### Time to 6 month remission



Phenytoin versus valproate monotherapy for partial onset seizures and generalized onset tonic-clonic seizures.  
*Smith C Tudur, AG Marson, PR Williamson.* The Cochrane Database of Systematic Reviews 2001, Issue 4. Art. No.: CD001769. DOI: 10.1002/14651858.CD001769.

### Time to first seizure



Phenytoin versus valproate monotherapy for partial onset seizures and generalized onset tonic-clonic seizures.  
*Smith C Tudur, AG Marson, PR Williamson.* The Cochrane Database of Systematic Reviews 2001, Issue 4. Art. No.: CD001769. DOI: 10.1002/14651858.CD001769.