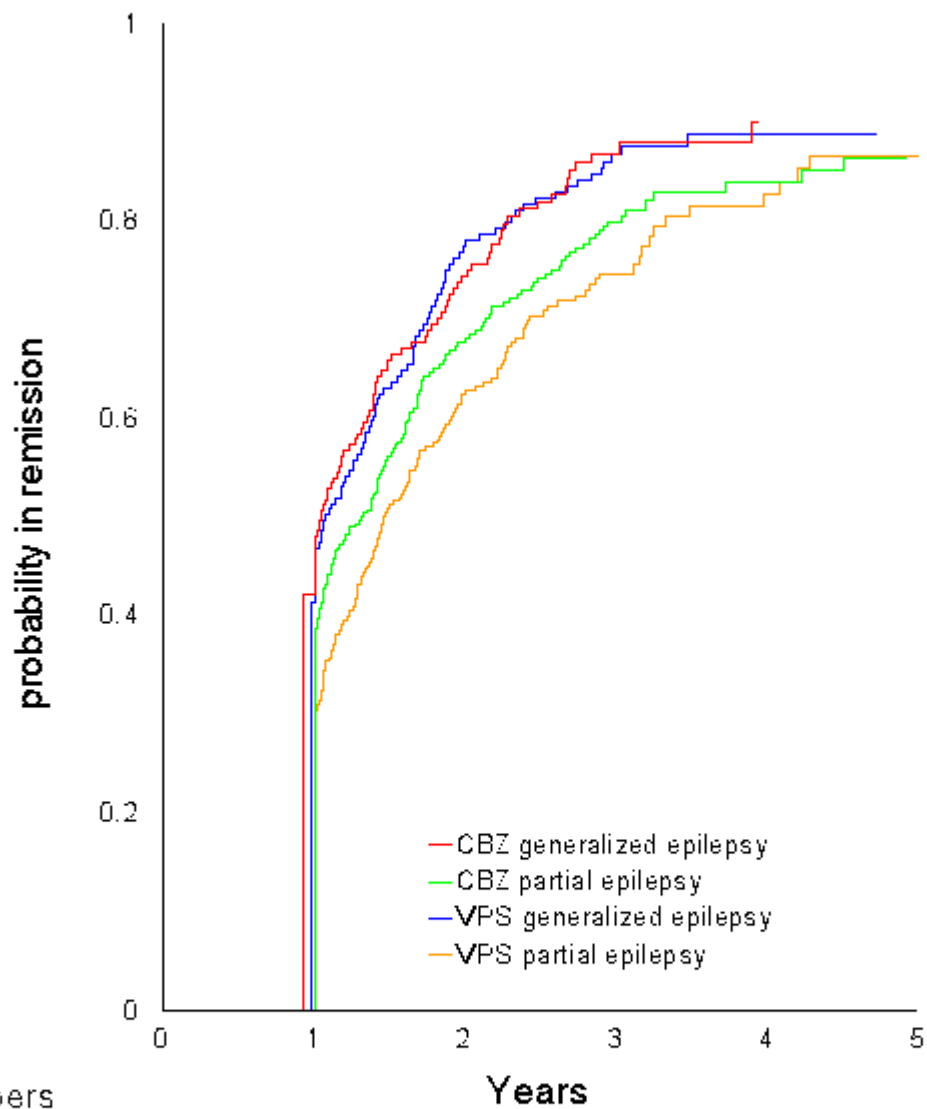


Time 12 month remission

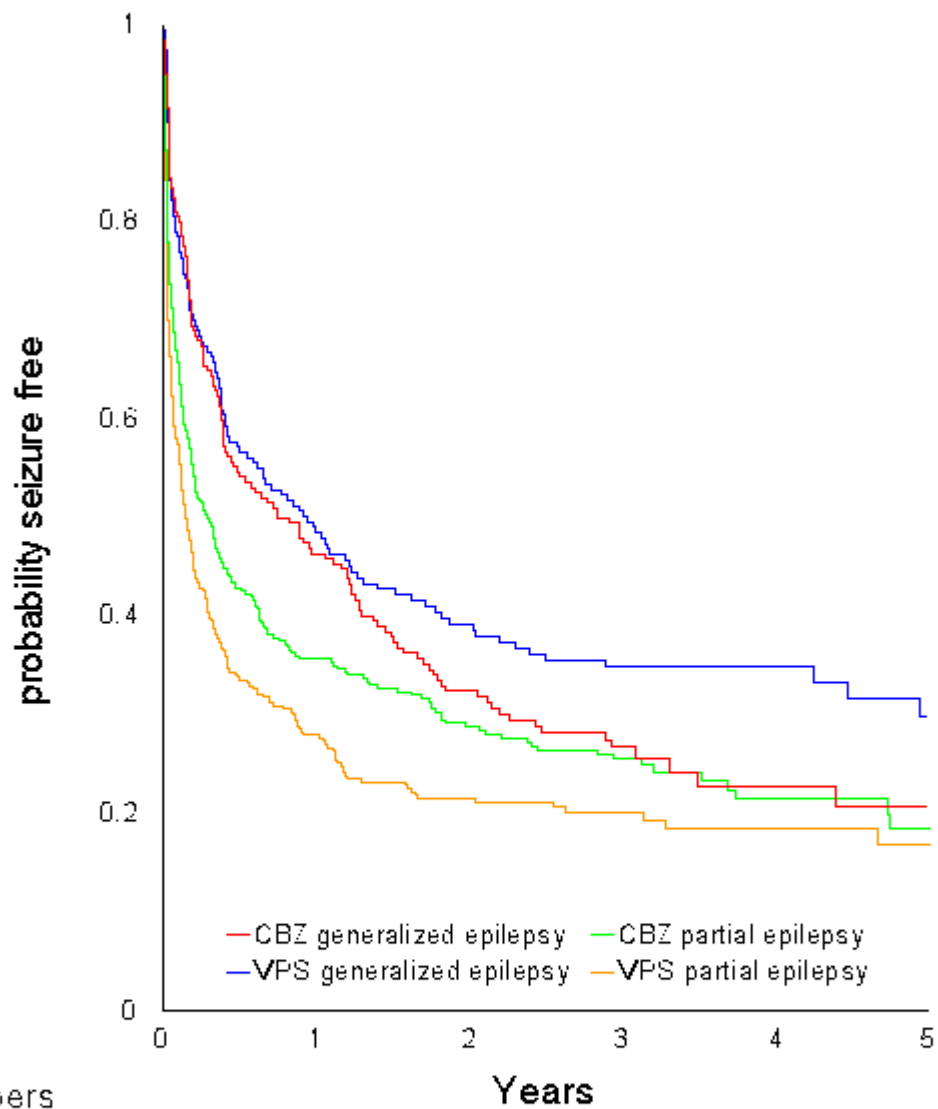


	Numbers at risk					
	0	1	2	3	4	5
CBZ GE	202	189	42	5	5	8
CBZ PE	412	299	82	14	9	8
VPS GE	193	181	37	9	7	15
VPS PE	418	305	88	14	9	8

Carbamazepine versus valproate monotherapy for epilepsy
 Marson AG, Williamson PR, Hutton JL, Clough HE, Chadwick DW, on behalf of the epilepsy monotherapy trialists

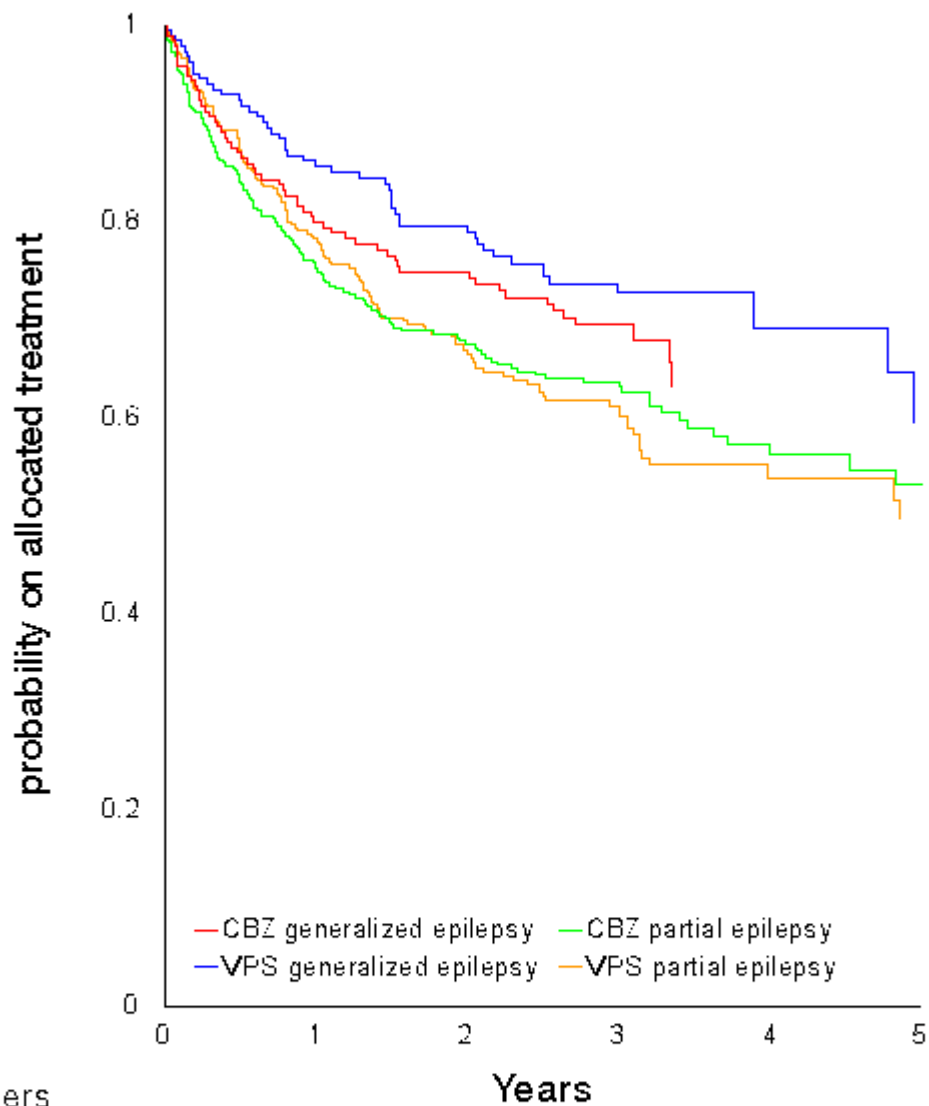
The Cochrane Database of Systematic Reviews 2000, Issue 3. Art. No.: CD001030. DOI: 10.1002/14651858.CD001030

Time to first seizure



Numbers at risk	0	1	2	3	4	5
CBZ GE	202	90	57	33	13	8
CBZ PE	412	115	77	51	20	8
VPS GE	193	89	66	51	24	15
VPS PE	418	91	56	37	16	8

Time to treatment withdrawal



Numbers at risk	Years					
	0	1	2	3	4	5
CBZ GE	196	146	125	69	17	12
CBZ PE	406	261	198	140	54	25
VPS GE	186	150	128	79	19	12
VPS PE	407	271	183	118	40	17